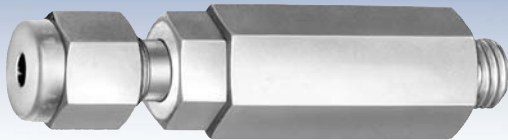


Brooks® Sintered Metal Filter

Variable Area

Brooks Sintered Metal Filters Models 1390 and 1391



Model 1390 Filter

Overview

The Brooks® Model 1390 Filter is designed to be used with Brooks flowmeters, flow controllers and NRS™ needle valves. Both male and female ends of this filter are 5/16 - 24 threads. The connection fitting supplied with the Brooks equipment is removed, the filter is screwed into its place and then the original connection fitting is attached to the female end of the filter.

Model 1391 Filter is identical to the Model 1390 except that it has a 1/8" NPT connection at the male end. It is intended for use with the standard adapter found on a Sho-Rate™ flowmeter and is screwed directly into the adapter. It may also be used in any 1/8" NPT female cavity.

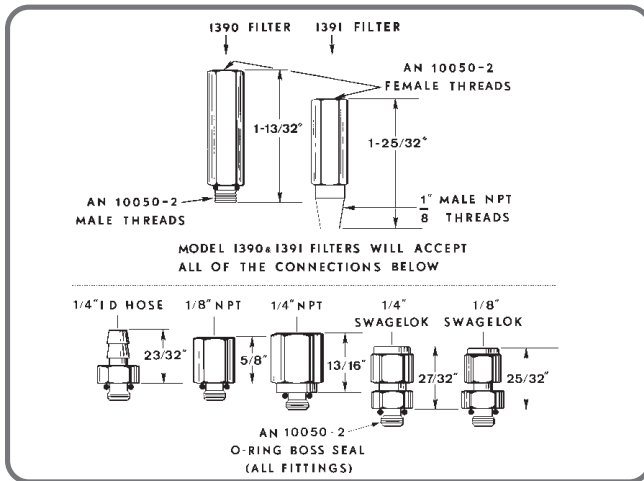
Product Features

- Convenient, in-line design
- Large filtering area
- Easy disassembly of sintered stainless steel filter element from protective housing for easy cleaning

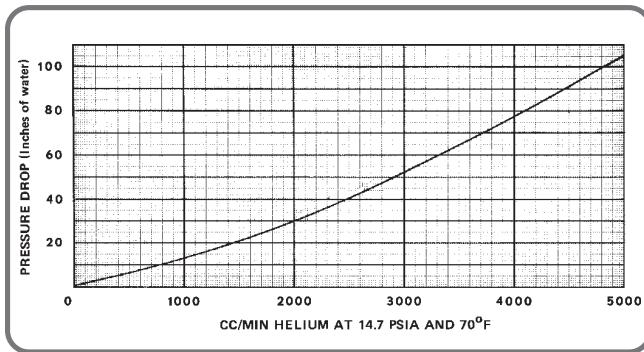
Product Specifications

Specifications	Models 1390 and 1391 Sintered Metal Filters
Maximum Operating Pressure	Aluminum Model: 2,000 psi; Stainless Steel Model: 3,000 psi
Maximum Operating Temperature	Aluminum Model: 180°F; Stainless Steel Model: 350°F
Pressure Drop and Capacity	See Pressure Drop and Capacity Graph
Connections	1390 Standard: 5/16-24 threads (male and female ends)
	1391 Standard: Male end: 1/8" NPT; Female end: 5/16-24 threads
	1390/1391 Optional: 1/8" or 1/4" compression; 1/8" or 1/4" female NPT; 1/4" ID hose
Materials of Construction:	
Filter Element	316L Stainless Steel (2 micron porosity)
Housing	Standard: Aluminum; Optional 316 Stainless Steel
O-Rings	Aluminum Housing: Buna-N; Stainless Steel Housing: Viton® fluoroelastomer
Spring	302 Stainless Steel

Product Dimensions



Pressure Drop and Capacity Graph



Brooks Service and Support

Brooks is committed to assuring all of our customers receive the ideal flow solution for their application, along with outstanding service and support to back it up. We operate first class repair facilities located around the world to provide rapid response and support. Each location utilizes primary standard calibration equipment to ensure accuracy and reliability for repairs and recalibration and is certified by our local Weights and Measures Authorities and traceable to the relevant International Standards.

Visit www.BrooksInstrument.com to locate the service location nearest to you.

START-UP SERVICE AND IN-SITU CALIBRATION

Brooks Instrument can provide start-up service prior to operation when required. For some process applications, where ISO-9001 Quality Certification is important, it is mandatory to verify and/or (re)calibrate the products periodically. In many cases this service can be provided under in-situ conditions, and the results will be traceable to the relevant international quality standards.

CUSTOMER SEMINARS AND TRAINING

Brooks Instrument can provide customer seminars and dedicated training to engineers, end users, and maintenance persons.

Please contact your nearest sales representative for more details.

Due to Brooks Instrument's commitment to continuous improvement of our products, all specifications are subject to change without notice.

Global Headquarters

Brooks Instrument
407 West Vine Street
Hatfield, PA
19440-0903 USA

Toll-Free (USA): 888-554-FLOW
T: 215-362-3500
F: 215-362-3745

BrooksAM@BrooksInstrument.com

A list of all Brooks Instrument locations and contact details can be found at www.BrooksInstrument.com

©Copyright 2017 Brooks Instrument, LLC All rights reserved. Printed in U.S.A.

Model Code

Code Description	Code Option	Option Description
I. Base Model	1390-	Filter with 5/16-24 Male Thread - normally used with a meter
	1391-	Filter with 1/8" NPT Male Thread
II. Housing Material	1	Aluminum
	2	Stainless Steel
III. Male Connection	A	5/16-24 threads (1390 only)
	B	1/8" NPT (1391 only)
IV. Female Connection	1	5/16-24 threads (Use with Flowmeter only)
	2	1/8" Compression
	3	1/4" Compression
	4	1/8" NPT
	5	1/4" NPT
	6	1/4" ID Hose
V. O-ring Material	A	Buna-N (Aluminum only)
	B	Viton (Stainless Steel only)

Sample Standard Model Code

I	II	III	IV	V
1391-	1	B	3	A

TRADEMARKS

Brooks, NRS & Sho-Rate Brooks Instrument, LLC
All other trademarks are the property of their respective owners.



BROOKS[®]
INSTRUMENT